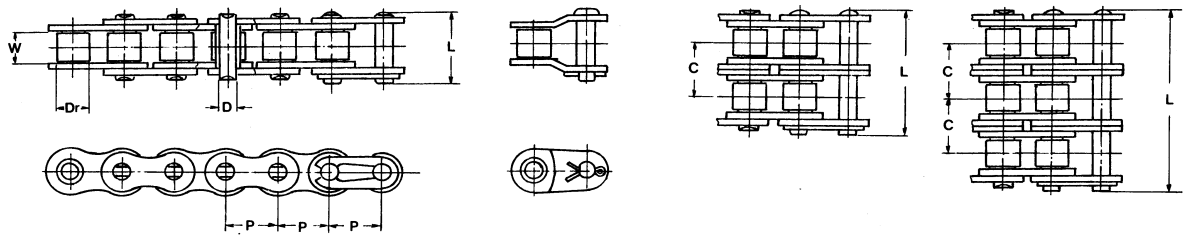


# TTC - Correntes e Engrenagens

Correntes de Rolo Simples, Duplas e Triplas - [NORMA ANSI](#)



Ref. ANSI	Ref. ISO ABTN	Passo P in mm	Entre Placa W min mm	Diam.Rolo Dr. max mm	Diam.Pino D max mm	Larg.Total L max mm	Passo Lat. C mm	Carg. Rupt. kgf	Peso kg/m
-----------	---------------	---------------------	----------------------------	----------------------------	--------------------------	---------------------------	-----------------------	--------------------	--------------

## S I M P L E S

25-1	04 A	1/4	6.35	3.10	3.30	2.31	8.5	—	450	0.13
35-1	06 C	3/8	9.525	4.68	5.08	3.59	13.1	—	1.100	0.32
40-1	08A	1/2	12.70	7.85	7.92	3.97	17.6	—	1.410	0.63
50-1	10 A-1	5/8	15.87	9.40	10.16	5.09	21.9	—	2.200	1.06
60-1	12 A-1	3/4	19.05	12.58	11.91	5.96	26.9	—	3.180	1.44
80-1	16 A-1	1	25.40	15.75	15.87	7.94	35.3	—	5.670	2.67
100-1	20 A-1	1 1/4	31.75	18.90	19.05	9.54	42.8	—	8.850	3.99
120-1	24 A-1	1 1/2	38.10	25.23	22.22	11.11	53.5	—	12.700	5.83
140-1	28 A-1	1 3/4	44.45	25.23	25.40	12.71	58.9	—	17.240	7.62
160-1	32 A-1	2	50.80	31.55	28.57	14.29	68.7	—	22.680	10.09
200-1	40 A-1	2 1/2	63.50	35.99	39.67	19.85	85.0	—	43.000	16.82
240-1	48 A-1	3	76.20	47.63	47.63	23.81	102.80	—	58.980	24.36

## D U P L A S

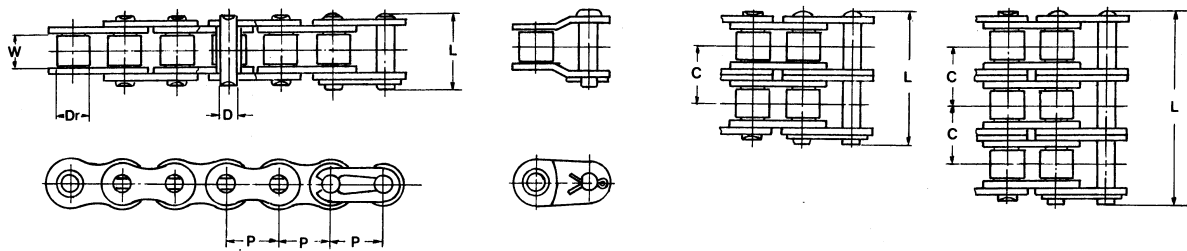
25-2	04 A-2	1/4	6.35	3.10	3.30	2.31	15.0	6.40	800	0.26
35-2	06 C-2	3/8	9.525	4.68	5.08	3.59	23.2	10.10	1.600	0.69
40-2	08 A-2	1/2	12.70	7.85	7.92	3.97	32.1	14.40	2.820	1.19
50-2	10 A-2	5/8	15.87	9.40	10.16	5.09	40.1	18.10	4.440	2.04
60-2	12 A-2	3/4	19.05	12.58	11.91	5.96	49.8	22.80	6.360	3.03
80-2	16 A-2	1	25.40	15.75	15.87	7.94	64.7	29.30	11.340	5.26
100-2	20 A-2	1 1/4	31.75	18.90	19.05	9.54	78.7	35.80	17.700	7.87
120-2	24 A-2	1 1/2	38.10	25.23	22.22	11.11	98.9	45.40	25.400	11.50
140-2	28 A-2	1 3/4	44.45	25.23	25.40	12.71	107.7	48.90	34.480	15.11
160-2	32 A-2	2	50.80	31.55	28.57	14.29	127.3	58.50	45.360	19.48
200-2	40 A-2	2 1/2	63.50	35.49	39.67	19.85	156.7	71.60	86.180	31.58
240-2	48 A-2	3	76,20	47.63	47.63	23.81	190.7	87,80	102.054	46.00

## T R I P L A S

25-3	04 A-3	1/4	6.35	3.10	3.30	2.31	21.4	12.80	1.080	0.39
35-3	06 C-3	3/8	9.525	4.68	5.08	3.59	33.4	20.20	2.400	1.05
40-3	08 A-3	1/2	12.70	7.85	7.92	3.97	46.4	28.80	4.230	1.78
50-3	10 A-3	5/8	15.87	9.40	10.16	5.09	58.3	36.20	6.660	3.06
60-3	12 A-3	3/4	19.05	12.58	11.91	5.96	72.7	45.60	9.540	4.51
80-3	16 A-3	1	25.40	15.75	15.87	7.94	94.0	58.60	17.010	7.83
100-3	20 A-3	1 1/4	31.75	18.90	19.05	9.54	114.5	71.61	26.550	11.72
120-3	24 A-3	1 1/2	38.10	25.23	22.22	11.11	144.4	90.80	38.100	17.16
140-3	28 A-3	1 3/4	44.45	25.23	25.40	12.71	156.6	97.80	51.720	22.60
160-3	32 A-3	2	50.80	31.55	28.57	14.29	186.0	117.00	68.040	28.90
200-3	40 A-3	2 1/2	63.50	35.49	39.67	19.85	228.3	143.20	120.270	46.20
240-3	48 A-3	3	76,20	47,63	47.63	23.81	278.6	175,60	153.081	68.70

# TTC - Correntes e Engrenagens

## Correntes de Rolo Simples e Duplas - [NORMA DIN](#)



Ref. DIN	Ref. B.T.	Passo P in	Entre Placa W min mm	Diam. Rolo Dr. max mm	Diam. Pino D max mm	Larg.Total L max mm	Passo Lat. C mm	Carg. Rupt. kgf	Peso kg/m
----------	-----------	---------------	-------------------------	--------------------------	------------------------	------------------------	--------------------	-----------------	-----------

### S I M P L E S

05 B-1	05 B-1	0.315	8.00	3.00	5.00	2.31	8.6	—	460	0.17
06 B-1	06 B-1	3/8	9.525	5.72	6.35	3.28	13.5	—	910	0.42
08 B-1	08 B-1	1/2	12.70	7.75	8.51	4.45	17.0	—	1.820	0.65
10 B-1	10 B-1	5/8	15.875	9.65	10.16	5.08	19.6	—	2.270	0.91
12 B-1	12 B-1	3/4	19.05	11.68	12.07	5.72	22.7	—	2.950	1.23
16 B-1	16 B-1	1	25.40	17.02	15.88	8.28	36.1	—	4.310	2.57
20 B-1	20 B-1	1 1/4	31.75	19.56	19.05	10.19	43.2	—	6.580	3.80
24 B-1	24 B-1	1 1/2	38.10	25.40	25.40	14.63	53.4	—	9.980	7.04
28 B-1	28 B-1	1 3/4	44.45	30.99	27.94	15.90	65.1	—	13.160	8.30
32 B-1	32 B-1	2	50.80	30.99	29.21	17.81	67.4	—	17.240	10.50
40 B-1	40 B-1	2 1/2	63.50	38.10	39.37	22.89	82.6	—	26.770	16.00

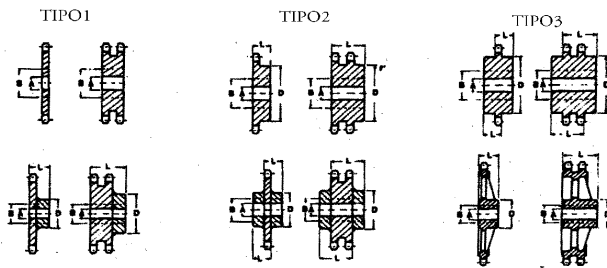
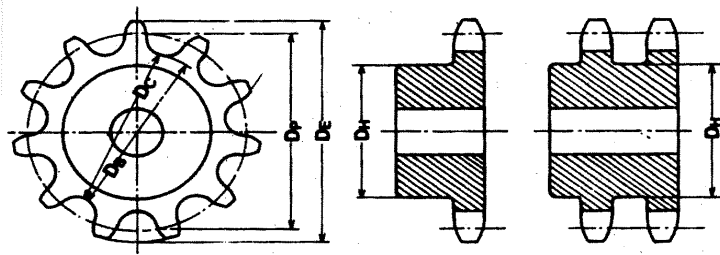
### D U P L A S

05 B-2	05 B-2	0.315	8.00	3.00	5.00	2.31	14.3	5.64	800	0.36
06 B-2	06 B-2	3/8	9.525	5.72	6.35	3.28	23.8	10.24	1.730	0.78
08 B-2	08 B-2	1/2	12.70	7.75	8.51	4.45	31.0	13.92	3.180	1.35
10 B-2	10 B-2	5/8	15.875	9.65	10.16	5.08	36.2	16.59	4.540	1.85
12 B-2	12 B-2	3/4	19.05	11.68	12.07	5.72	42.2	19.46	5.900	2.50
16 B-2	16 B-2	1	25.40	17.02	15.88	8.28	68.0	31.88	8.620	5.40
20 B-2	20 B-2	1 1/4	31.75	19.56	19.05	10.19	79.7	36.45	13.160	7.20
24 B-2	24 B-2	1 1/2	38.10	25.40	25.40	14.63	101.8	48.36	19.960	13.50
28 B-2	28 B-2	1 3/4	44.45	30.99	27.94	15.90	124.7	59.56	26.320	16.60
32 B-2	32 B-2	2	50.80	30.99	29.21	17.81	126.0	58.55	34.480	21.00
40 B-2	40 B-2	2 1/2	63.50	38.10	39.37	22.89	154.9	72.29	53.540	32.00

Além dos Tipos Relacionados Dispomos de Correntes Agrícolas, Correntes para Variador PIV, Correntes de Plataforma - Inox/Termoplástica, Correntes para Empilhadeiras e Correntes Especiais

# TTC - Correntes e Engrenagens

## Engrenagem para Correntes - NORMA ANSI-ASA



TIPO4  
A=FURO PILOTO  
B=FURO MÁXIMO RECOMENDÁVEL

TIPO5

TIPO6

Diam. Primitivo (DP)

$$D^P = \frac{P}{\sin \frac{180^\circ}{N}}$$

Diam. Externo (DE)

$$DE = P \left( 0.6 + \cot \frac{180^\circ}{N} \right)$$

Diam. Base (D<sup>B</sup>)

$$D^B = D^P - D^r \quad D^r = \text{Diam. rolo}$$

Diam. Caliper (D<sup>C</sup>) = D<sup>C</sup>DE ... N = PAR

$$D^C = D^P \cos \frac{90^\circ}{N} - DR... \text{ impar}$$

Diam. máx. do cubo (D<sup>H</sup>) =

$$D^H = P \left( \cot \frac{180^\circ}{N} - 1 \right) - 0.76$$

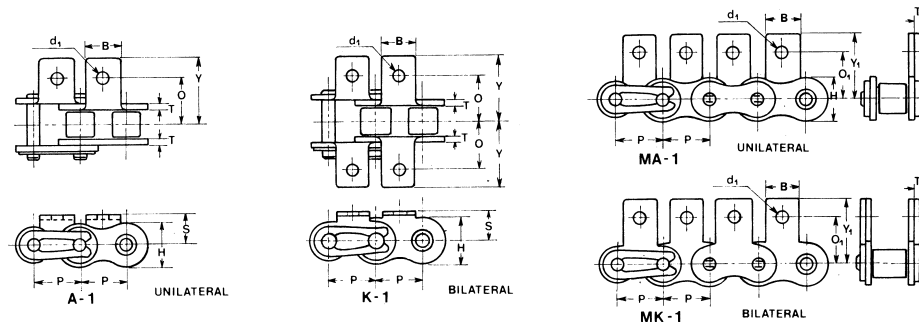
Diam. Externo (D<sup>P</sup>)

N	TTC-35		TTC-40		TTC-50		TTC-60		TTC-80		TTC-100		TTC-120		TTC-140		TTC-160		TTC-200	
	Dp	De	Dp	De	Dp	De	Dp	De	Dp	De	Dp	De	Dp	De	Dp	De	Dp	De	Dp	De
13	39.80	44	53.07	59	66.34	74	79.60	89	106.14	118	132.67	148	159.20	177	185.74	207	212.27	237	265.34	296
14	42.81	47	57.07	63	71.34	79	85.61	95	114.15	127	142.68	158	171.22	190	199.76	221	228.30	253	285.37	316
15	45.81	50	61.08	67	76.35	84	91.62	101	122.17	135	152.71	168	183.25	202	213.79	236	244.33	269	305.42	337
16	48.82	53	65.10	71	81.37	89	97.65	107	130.20	143	162.74	179	195.29	214	227.84	250	260.39	286	325.49	357
17	51.84	56	69.12	76	86.39	94	103.67	113	138.23	151	172.79	189	207.35	227	241.91	264	276.46	302	345.58	378
18	54.85	59	73.14	80	91.42	100	109.71	119	146.27	159	182.84	199	219.41	239	255.98	279	292.55	319	365.68	398
19	57.87	62	77.16	84	96.45	105	115.74	126	154.32	167	192.90	209	231.48	251	270.06	293	308.64	335	385.79	419
20	60.89	65	81.18	88	101.48	110	121.78	132	162.37	176	202.96	220	243.55	263	284.15	307	324.74	351	405.92	439
21	63.91	69	85.21	92	106.51	115	127.82	138	170.42	184	213.03	230	255.63	276	298.24	322	340.84	368	426.05	459
22	66.93	72	89.24	96	111.55	120	133.86	144	178.48	192	223.10	240	267.72	288	312.34	336	356.96	384	446.20	480
24	72.97	78	97.30	104	121.62	130	145.95	156	194.60	208	243.25	260	291.90	312	340.54	364	389.19	416	486.49	520
26	79.02	84	105.36	112	131.70	140	158.04	168	210.72	224	263.40	281	316.09	337	368.77	393	421.45	449	526.81	561
30	91.12	96	121.50	128	151.87	161	182.25	193	243.00	257	303.75	321	364.50	385	425.24	450	485.99	514	607.49	642
32	97.18	102	129.57	137	161.96	171	194.35	205	259.14	273	323.92	341	388.71	410	453.49	478	518.28	546	647.85	683
35	106.26	111	141.68	149	177.10	186	212.52	223	283.36	297	354.20	372	425.04	446	495.88	521	566.71	595	708.39	744
38	115.34	120	151.79	161	192.24	201	230.69	241	307.58	322	384.48	402	461.38	483	538.27	563	615.17	644	768.96	804
40	121.40	126	161.87	169	202.33	211	242.80	253	323.74	338	404.67	422	485.60	507	566.54	591	647.47	676	809.34	845
45	136.55	142	182.06	189	227.58	237	273.09	284	364.12	378	455.16	473	546.19	568	637.22	662	728.25	757	910.31	946
50	151.69	157	202.26	209	252.83	262	303.39	314	404.52	419	505.65	524	606.78	628	707.91	733	809.04	838	1011.30	1047
55	166.84	172	222.46	230	278.08	287	333.69	345	444.92	459	556.15	574	667.38	689	778.61	804	889.84	919	1112.30	1149
60	182.00	187	242.66	250	303.33	312	363.99	375	485.33	500	606.66	625	727.99	750	849.32	875	970.65	1000	1213.31	1250
65	197.15	202	262.87	270	328.58	338	394.30	405	525.73	540	657.17	675	788.60	811	920.03	946	1051.47	1081	1314.34	1351
70	212.30	217	283.07	290	353.84	363	424.61	436	566.15	581	707.68	726	849.22	871	990.75	1016	1132.29	1162	1415.36	1452
75	227.46	233	303.28	311	379.16	388	454.92	466	606.56	621	758.20	777	909.84	932	1061.47	1087	1213.11	1243	1516.39	1553
80	242.61	248	323.49	331	404.30	414	485.23	496	646.97	662	808.71	827	970.46	993	1132.20	1158	1293.94	1323	1617.43	1654
90	272.92	278	358.90	371	454.88	464	545.85	557	727.80	743	909.75	928	1091.71	1114	1273.66	1300	1455.61	1485	1819.51	1856

Além dos Tipos Relacionados Fabricamos  
Engrenagens Especiais Conforme o Desenho, Rodas Dentadas e Polias

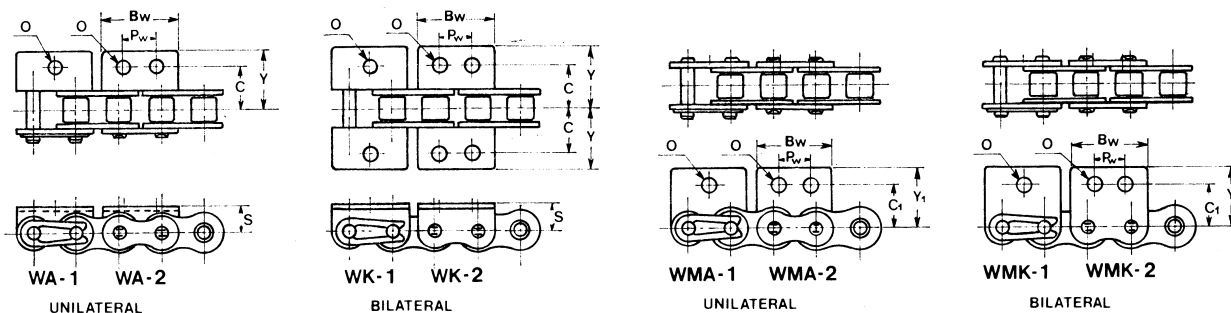
# TTC - Correntes e Engrenagens

## Adicionais para Correntes de Rolo



### D I M E N S Õ E S

Ref TTC	Passo P	Peso (Kg/m)	ABAS								Peso p/ peça		
			T	H	O <sub>1</sub>	Y <sub>1</sub>	S	O	Y	B	d <sub>1</sub>	A,MA	K,MK
TTC-40	12.70	0.63	1.50	12.0	12.70	17.5	7.94	12.70	17.6	9.6	3.5	0.002	0.004
TTC-50	15.875	1.06	2.0	15.0	15.88	22.6	10.32	15.88	23.0	12.7	5.2	0.003	0.006
TTC-60	19.05	1.44	2.4	18.1	18.26	26.2	11.91	19.05	27.0	15.9	5.2	0.006	0.012
TTC-80	25.40	2.67	3.2	24.0	24.61	34.1	15.88	25.40	34.9	19.1	6.5	0.011	0.022
TTC-100	31.75	3.99	4.0	29.9	31.75	42.8	19.84	31.75	43.3	25.4	8.1	0.024	0.048
TTC-120	38.10	5.83	4.8	35.9	36.51	50.3	23.02	38.10	53.2	28.6	9.8	0.037	0.074
TTC-140	44.45	7.62	5.6	41.9	44.45	62.4	28.58	44.45	61.9	35.0	11.4	0.068	0.136
TTC-160	50.80	10.09	6.4	47.8	50.80	68.1	31.75	50.80	69.9	38.1	13.1	0.091	0.182



### D I M E N S Õ E S

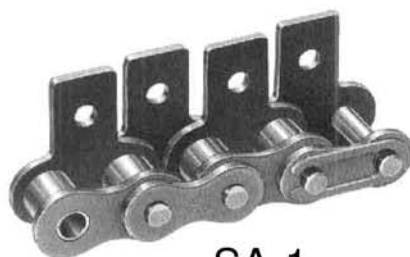
Ref TTC	Passo P	ABAS								Peso p/ peça	
		C	C <sub>1</sub>	S	T	Y	Y <sub>1</sub>	Bw	Pw	WA,WMA	Wk,WMK
TTC-40	12.70	12.70	12.70	7.92	1.5	17.6	17.5	23.0	9.5	0.003	0.006
TTC-50	15.875	15.88	15.88	10.31	2.0	23.0	22.6	28.8	11.9	0.007	0.014
TTC-60	19.05	19.05	18.26	11.91	2.4	27.0	26.2	34.6	14.3	0.012	0.024
TTC-80	25.40	25.40	24.61	15.88	3.2	34.9	34.1	46.1	19.1	0.026	0.052
TTC-100	31.75	31.75	31.75	19.05	4.0	43.3	42.8	57.7	23.8	0.051	0.102

ALÉM DOS TIPOS RELACIONADOS DISPOMOS DE OUTROS TIPOS DE ADICIONAIS

# CORRENTES COM ADICIONAIS



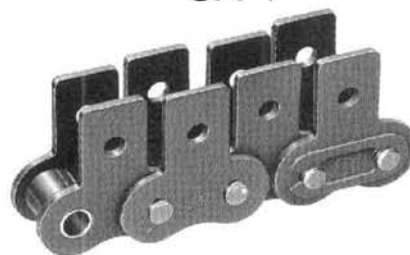
A-1



SA-1



K-1



SK-1



A-2



SA-2



K-2



SK-2



D-1



D-1



D-3



D-3

**TTC Correntes e Engrenagens**

11 3922-3830 / 3976-3708

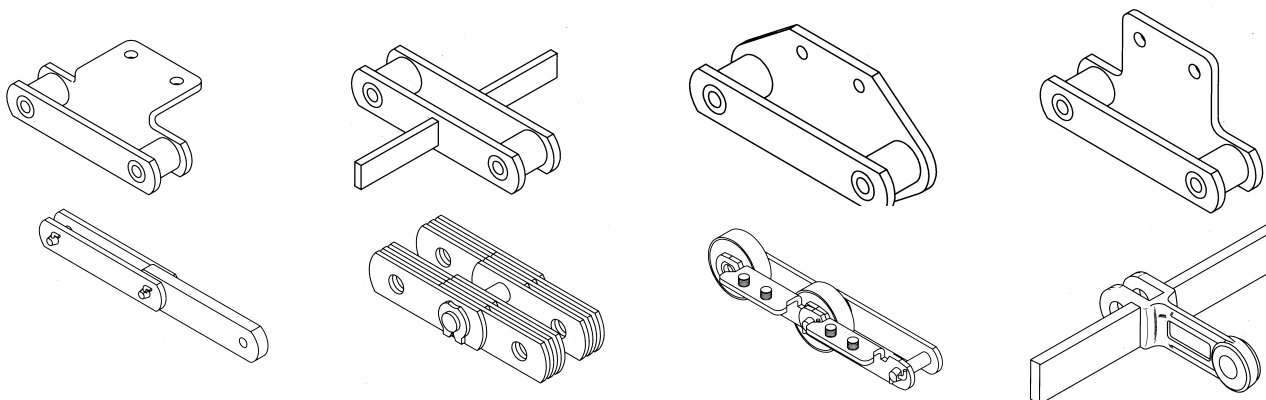
[www.correntesttc.com.br](http://www.correntesttc.com.br) - [ttcvendas@terra.com.br](mailto:ttcvendas@terra.com.br)

# TTC - Correntes e Engrenagens

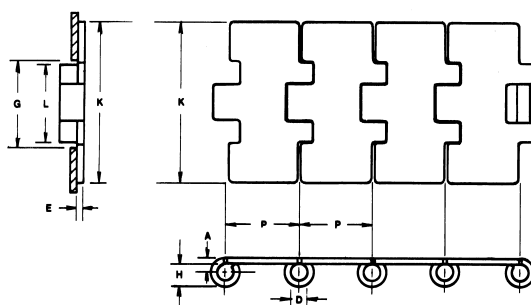
## Correntes Transportadoras

Fabricação de correntes transportadoras e elevadoras  
para vários segmentos industriais:

MINERAÇÃO - CIMENTO - CAL - GESSO - QUÍMICA - PETROQUÍMICA - FERTILIZANTES  
ALIMENTÍCIAS - EMBALAGENS - GRÃO - RAÇÕES - PAPEL CELULOSE  
CÍTRICO - BEBIDAS - AUTOMOBILÍSTICO - PETROLÍFERO



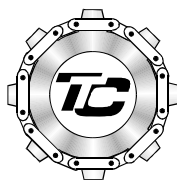
## Correntes Transportadoras



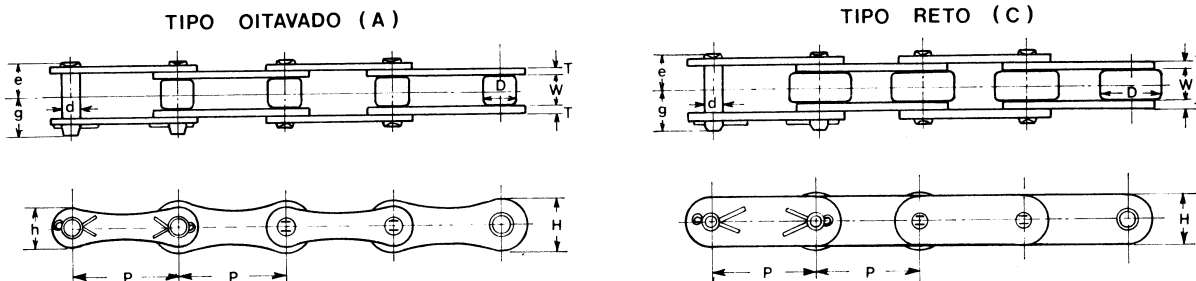
Ref. TTC Aço Carbono	Ref. TTC Aço Inox	Largura K pol.	Largura K mm	Passo P mm	Passo E mm	Diam. Pino D mm	Larg. Dobr. G mm	Altura H mm	Centro A mm	Peso Aproxi kg/m
S-815	SS-815	3.1/4	82,6							2,74
S-815	SS-815	4	101,6	38,1	3,0	6,35	42,1	12,7	6,35	3,19
S-815	SS-815	4.1/2	114,3							3,48
S-815	SS-815	6	152,4							4,38
S-815	SS-815	7.1/2	190,5							5,27

## TTC – Correntes e Engrenagens

Tel/Fax.: (0xx11) 3992-3830 / 3976-3708 - e-mail: [ttc2@terra.com.br](mailto:ttc2@terra.com.br)  
Rua Rio Verde, 761 - Freguesia do Ó - São Paulo - SP - CEP: 02934-000



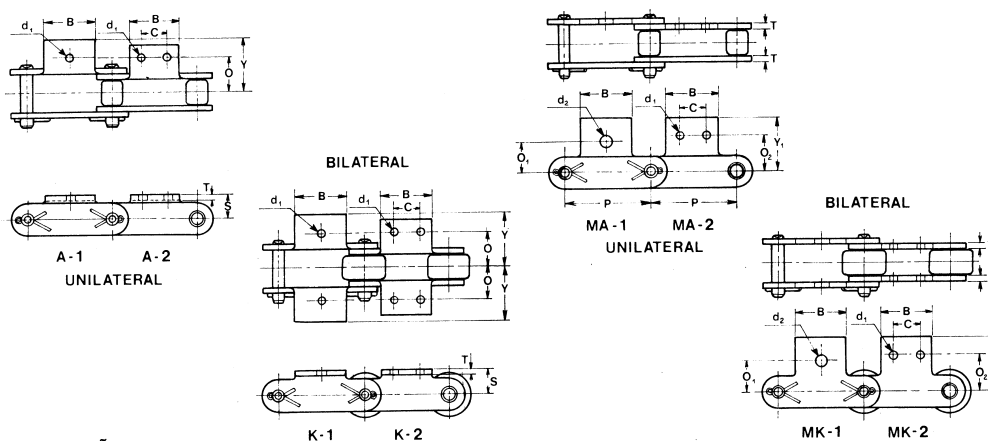
## Correntes de Passo Longo



### DIMENSÕES

Ref. TTC	Tipo	Passo P mm	Entre Placas W mm	Rolo D mm	Pino			Placa		Tipo Pino	Carga Ruptura Min.	Peso (Kg/m)
					d	e	g	T	H			
TTC2040	C	25.40	7.95	7.92	3.96	8.2	10.1	1.5	11.7	Rebite	1.420	0.49
TTC2042	C			15.88							0.86	
TTC2050	A/C	31.75	9.53	10.16	5.08	10.1	12.1	2.0	15.1	Rebite	2.220	0.84
TTC2052	C			19.05							1.32	
TTC2060	C	38.10	12.70	11.91	5.95	14.3	16.8	3.2	17.3	Rebite	3.190	1.45
TTC2062	C			22.23		(12.7)	(15.1)	(2.4)			2.17	
TTC2080	C	50.80	15.88	15.88	7.93	18.0	20.7	4.0	23.3	Rebite	5.670	2.46
TTC2082	C			28.58		(16.4)	(19.0)	(3.2)			3.53	
TTC2100	C	63.50	19.05	19.05	9.53	21.8	24.5	4.8	28.8	Contrapino	9.300	3.60
TTC2102	C			39.68		(20.1)	(22.8)	(4.0)			5.81	

## Adicionais para Correntes de Passo Longo



### DIMENSÕES

Ref. TTC	Passo P	Dimensões dos Dispositivos										Peso dos Dispositivos		
		S	O	Y	Y <sub>1</sub>	O <sub>1</sub>	O <sub>2</sub>	C	B	d <sub>1</sub>	d <sub>2</sub>	T	A,MA	K,MK
TTC2040	25.40	9.13	12.70	19.4	19.8	11.11	13.50	9.53	19.1	3.5	5.2	1.5	0.003	0.006
TTC2042														
TTC2050	31.75	11.11	15.88	24.4	24.6	14.29	15.88	11.91	23.8	5.2	6.5	2.0	0.006	0.012
TTC2052														
TTC2060	38.10	14.68	21.43	33.3	30.6	17.46	19.05	14.29	28.6	5.2	8.1	3.2	0.016	0.032
TTC2062												(2.4)	(0.013)	(0.026)
TTC2080	50.80	19.05	27.78	40.8	40.5	22.23	25.40	19.05	38.1	6.5	9.8	4.0	0.034	0.068
TTC2082												(3.2)	(0.028)	(0.056)
TTC2100	63.50	23.42	33.34	51.6	50.4	28.58	31.75	23.81	47.6	8.1	13.1	4.8	0.064	0.128
TTC2102												(4.0)	(0.059)	(0.118)